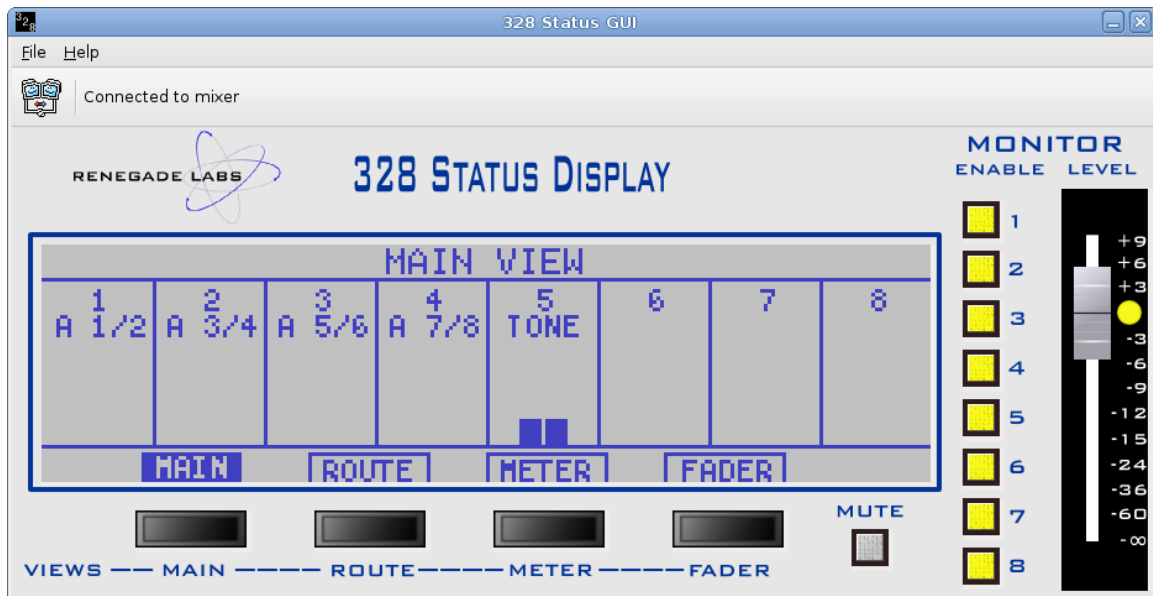


# 328 Status GUI



## Operations and Installation Guide

For Blue|328 and Gray|328 Digital Audio Mixers

# Publishing and Copyright Information

328 Status GUI Operations and Installation Guide  
Part Number 070-44014

## Publishing History

Revision 1: May 2010

## Copyright

© Renegade Labs, Inc. 2010. All rights reserved. No part of this publication may be reproduced, transmitted, transcribed, stored in a retrieval system, or translated into any languages in any form by any means without the written permission of Renegade Labs.

## Notice

Information contained in this document is not guaranteed and is subject to change without notice or obligation, and does not represent a commitment on the part of Renegade Labs, Inc.

## Company Information

Renegade Labs, Inc.  
P.O. Box 86  
Cedar Ridge, California 95924  
United States of America

Voice: +(530) 273-7047  
Fax: +(530) 271-0757  
Web: [www.renegadelabs.com](http://www.renegadelabs.com)  
email: [info@renegadelabs.com](mailto:info@renegadelabs.com)

---

# Table of Contents

- [Overview.....4](#)
- [Overview of the Status GUI.....4](#)
- [Operations.....5](#)
- [Status GUI Operations.....5](#)
- [Installation.....7](#)
- [Mixer Setup.....7](#)
- [328 Status GUI Installation on Windows.....8](#)
- [328 Status GUI Installation on Linux.....9](#)
- [Index .....10](#)

---

## Overview

### Overview of the Status GUI

The 328 Status GUI is a standalone PC application that allows the viewing of the Blue|328 or Gray|328 LCD status display remotely. The Status GUI also allows for switch mixer views, muting, individual monitor enables, and monitor level control.

The Status GUI runs on either Linux or Windows based PC's over a TCP connection. The mixer must be configured with a static IP address that the Status GUI uses to connect to. The Status GUI supports functionality over standard TCP networks.

#### *Note*

---

The Blue and Gray 328 MXE mixer series currently do not support use of the Status GUI.

---

## Operations

The 328 Status GUI was designed for very simple operations. The following diagram shows all of the functionality of the 328 Status GUI.

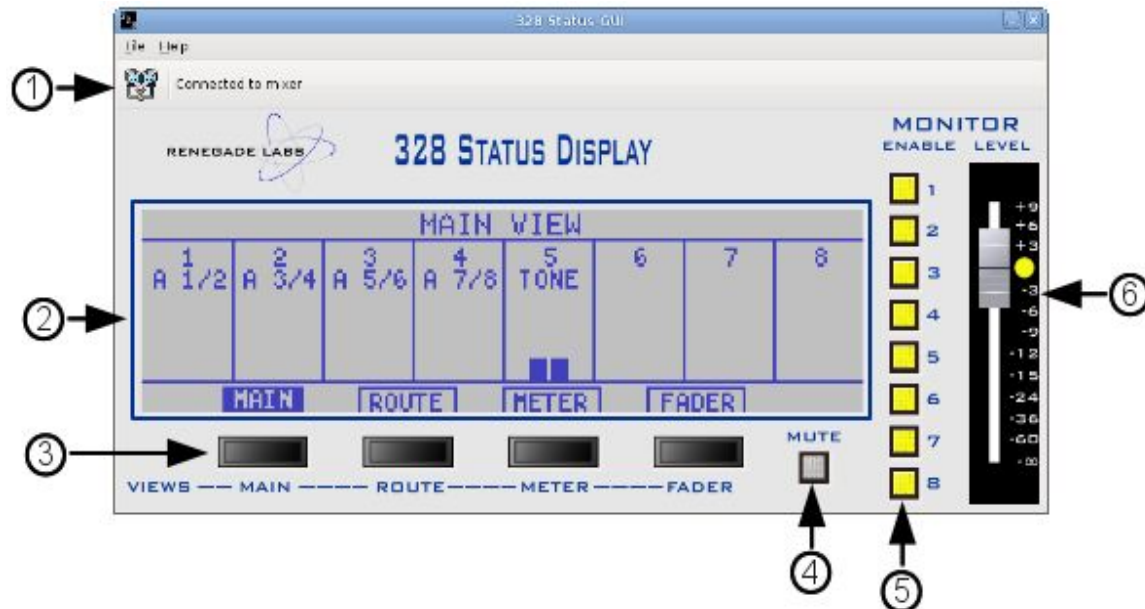


Figure 1. 328 Status GUI layout

### Status GUI Operations

- 1. Connection Button:** Press the Connection Button to connect to the mixer. A message box window will appear allowing you to enter the mixer's IP address.

#### Note

The mixer's IP address can be viewed from the mixer's Info Menu. Refer to your mixer's operations manual for additional information regarding the Info Menu.

- 2. Status Display Window:** Once connected to a mixer the the Status Display Window will follow the Status Display on the mixer.
- 3. Soft-Buttons:** The Soft-Buttons have the same functionality as the soft-buttons on the connected mixer. Please refer to the mixer's operations guide for more information regarding the soft-buttons.
- 4. Mute Button:** The Mute button follows the Mute button on the mixer. The button will light when Mute is active or when a Monitor Enable is disabled.
- 5. Monitor Enables:** The Monitor Enables are used to extend the mixer monitoring capabilities by allowing individual control of each monitor output. Monitor output channels can be individually enabled and disabled allowing for the isolation of particular output channels.

- 6. Monitor Level Control:** The Monitor Level Control allows for the adjustment of the monitor outputs. The Monitor Level Control follows the mixer's Monitor Knob and will move accordingly with Monitor Knob adjustments.

# Installation

## Mixer Setup

In order for the Status GUI to connect to the mixer the mixer must have a unique static IP assigned to it. A Compact Flash card reader along with a PC is required to assign a static IP address on the mixer.

### Note

By default the mixer's static IP address is "192.168.0.4". Always check with your IT manager before assigning static IP address to your mixer.

### Setting the Mixer's IP Address

To set the mixer's IP address perform the following:

1. Turn the mixer off and remove the Compact Flash card.
2. Install the Compact Flash card into a Compact Flash card reader and connect to a PC.
3. On the PC open the Compact Flash card.
4. Open the Customer directory on the Compact Flash.
5. In the Customer directory open the file "ifcfg-eth0" with a text editor (Notepad in Windows).
6. Change the mixer's IP address as shown:

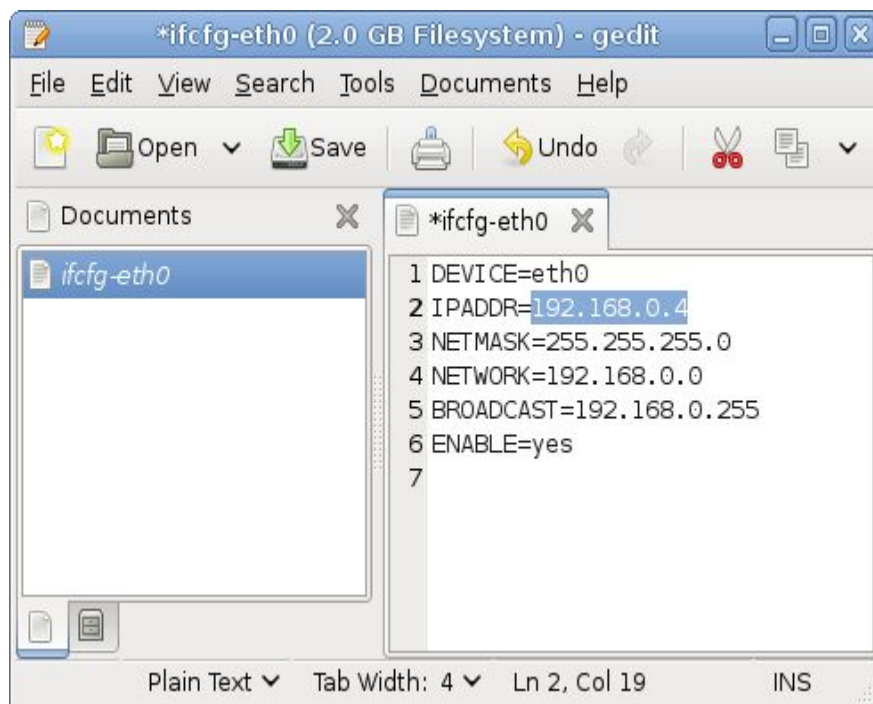


Figure 1. Setting Mixer's IP Address

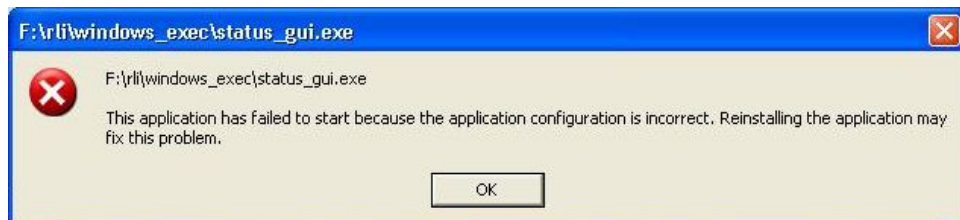
1. Save the file and re-install the Compact Flash card back into the mixer.

2. Turn the mixer on.
3. Connect the mixer's Ethernet port to the same physical network as the host PC that will be running the Status GUI.

## 328 Status GUI Installation on Windows

The current 328 Status GUI for Window can be downloaded from:  
[www.renegadelabs.com/support/dlsoftware.html](http://www.renegadelabs.com/support/dlsoftware.html)

To install the the 328 Status GUI on a Windows PC simply copy the 328\_status\_gui.exe onto the computer and run it. If the following configuration error message is encountered:



*Figure 1. Windows configuration error message*

Download and install the vcredist\_x86.exe available from:  
[www.renegadelabs.com/support/dlsoftware.html](http://www.renegadelabs.com/support/dlsoftware.html)

The vcredist\_x86.exe is distributed from Microsoft and it installs the necessary dll files in order for the 328 Status GUI to run.

When running the 328 Status GUI make sure that needed TCP ports 34995 and 35029 are unblocked by any Firewall. If the Windows Security Alert message appears as shown make sure Unblock is selected.



*Figure 2. Windows Security Alert, select Unblock*

### Windows System Requirements

The 328 Status GUI requires the following:

- Windows XP, Windows 7
- Open TCP ports 34995 and 35029

### 328 Status GUI Installation on Linux

For Linux PCs the wxWidgets library version 2.8.10 is required. Refer to [www.wxWidgets.org](http://www.wxWidgets.org) for installation and requirements for your Linux distribution.

Download the Linux version of the 328 Status GUI from:

[www.renegadelabs.com/support/dlsoftware.html](http://www.renegadelabs.com/support/dlsoftware.html)

The 328 Status GUI is a compressed tarball of the source code that must be compiled on the host PC. To build the 328 Status GUI perform the following:

- 1.** Create a directory and copy the downloaded compressed tarball into.
- 2.** Extract the files using “tar -xvxf <filename>” command.
- 3.** Refer to the included README file for build instructions.

### Linux System Requirements

The 328 Status GUI requires the following:

- wxWidgets 2.8.10
- gcc C++ compiler
- Open TCP ports 34995 and 35029

---

# Index

## C

Compact Flash 7  
configuration error message 8  
Connection Button 5

## I

ifcfg-eth0 7  
Installation on Linux 9  
Installation on Windows 8  
IP address 7

## L

Linux System Requirements 9

## M

Monitor Enables 5

Monitor Level Control 6  
Mute Button 5

## S

Setting the Mixer's IP Address 7  
Soft-Buttons 5  
Status Display Window 5  
Status GUI Operations 5

## T

TCP ports 9

## W

Windows Security Alert 8  
Windows System Requirements 9  
wxWidgets 9